

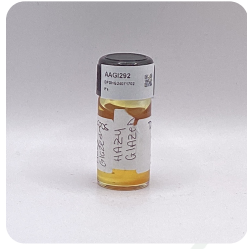


Certificate of Analysis
Compliance Test

Client Information:

P's Batch # DPDHG24071702 Test Reg State: Florida
2625 S Hickory Batch Date: 2025-01-22
Santa Ana, California 92707 Extracted From: Hemp

Order # PS250122-050001 Sampling Date: 2025-01-27 Initial Gross Weight: 30.190 g Number of Units: 1
Order Date: 2025-01-22 Lab Batch Date: 2025-01-27 Net Weight per Unit: 2000.000 mg
Sample # AAGI292 Completion Date: 2025-02-03



Product Image

Potency Tested HHCP Tested

Potency 25 (LCUV) Specimen Weight: 501.370 mg Tested SOP13.001 (LCUV)

Analyte	Dilution (1:n)	LOD (mg/g)	LOQ (%)	Result (mg/g)	(%)
Delta9-THCP *	5000.000	1.17E-5	0.012	227.8000	22.7800
CBN	50.000	1.40E-5	0.015	6.3000	0.6300
Delta-8 THC	50.000	2.60E-5	0.015	4.5400	0.4540
Delta8-THCP *	50.000	3.75E-4	0.015	2.6090	0.2609
CBD	50.000	5.40E-5	0.015	0.1700	0.0170
CBC	50.000	1.80E-5	0.015	<LOQ	<LOQ
CBCA	50.000	1.07E-4	0.015	<LOQ	<LOQ
CBDA	50.000	1.00E-5	0.015	<LOQ	<LOQ
CBDV	50.000	6.50E-5	0.015	<LOQ	<LOQ
CBDVA	50.000	1.40E-5	0.015	<LOQ	<LOQ
CBG	50.000	2.48E-4	0.015	<LOQ	<LOQ
CBGA	50.000	8.00E-5	0.015	<LOQ	<LOQ
CBL	50.000	3.50E-5	0.015	<LOQ	<LOQ
CBNA	50.000	9.50E-5	0.015	<LOQ	<LOQ
CBT	50.000	2.00E-4	0.015	<LOQ	<LOQ
Delta-8 THC-O Acetate	50.000	2.70E-5	0.025	<LOQ	<LOQ
Delta-8 THCV	50.000	4.00E-5	0.015	<LOQ	<LOQ
Delta-9 THC	50.000	1.30E-5	0.015	<LOQ	<LOQ
Delta-9 THC-O Acetate	50.000	7.70E-5	0.025	<LOQ	<LOQ
Exo-THC	50.000	2.30E-4	0.015	<LOQ	<LOQ
THCA-A	50.000	3.20E-5	0.015	<LOQ	<LOQ
THCB *	50.000	1.80E-4	0.0163	<LOQ	<LOQ
THCH *	50.000	3.50E-4	0.0163	<LOQ	<LOQ
THCV	50.000	7.00E-6	0.015	<LOQ	<LOQ
THCVA	50.000	4.70E-5	0.015	<LOQ	<LOQ
Total Active CBD	50.000			0.170	0.017
Total Active THC	50.000			<LOQ	<LOQ

Potency Summary

49.861% Total HHC	997.220 mg	-	Total Active THC	None Detected
0.017% Total Active CBD	0.340 mg	-	Total CBG	None Detected
0.630% Total CBN	12.600 mg	74.003%	Total Cannabinoids	1480.060 mg

Aixia Sun Lab Director/Principal Scientist
D.H.Sc., M.Sc., B.Sc., MT (AAB)



Definitions and Abbreviations used in this report: Total Active CBD = CBD + (CBD-A * 0.877), *Total CBDV = CBDV + (CBDVA * 0.867), Total Active THC = THCA-A * 0.877 + Delta 9 THC, Total THCV = THCV + (THCVA * 0.87), CBG Total = (CBGA * 0.878) + CBG, CBN Total = (CBNA * 0.876) + CBN, Total CBC = CBC + (CBCA * 0.877), Total THC-O-Acetate = Delta 8 THC-O-Acetate + Delta 9 THC-O-Acetate, Total THCP = Delta8-THCP + Delta9-THCP, Total Cannabinoids = Total percentage of cannabinoids within the sample. (mg/ml) = Milligrams per Milliliter, LOQ = Limit of Quantitation, LOD = Limit of Detection, Dilution = Dilution Factor, (ppb) = Parts per Billion, (%) = Percent, (cfu/g) = Colony Forming Unit per Gram, (µg/g) = Microgram per Gram, (ppm) = Parts per Million, (ppm) = (µg/g), (aw) = Water Activity, (mg/Kg) = Milligram per Kilogram. ACS uses simple acceptance criteria. Passed - Analyte/microbe is not detected or is at the level below the action limit per FL rule 64ER20-39, 5K-4.036, 5K-4.034. Failed - Analyte/microbe is at the level that equal or above the action limit per FL rule 64ER20-39, 5K-4.036, 5K-4.034 The results apply to the sample as received.
This report shall not be reproduced, without written approval, from ACS Laboratory. The results of this report relate only to the material or product analyzed. Test results are confidential unless explicitly waived otherwise. ACS Laboratory is accredited to the ISO/IEC 17025:2017 Standard. The tests and/or calibrations marked with an "*" are not ISO/IEC 17025:2017 accredited test results.



Certificate of Analysis
Compliance Test

Client Information:

P's Batch # DPDHG24071702 Test Reg State: Florida
Batch Date: 2025-01-22
2625 S Hickory Extracted From: Hemp
Santa Ana, California 92707

Order # PS250122-050001 Sampling Date: 2025-01-27 Initial Gross Weight: 30.190 g Number of Units: 1
Order Date: 2025-01-22 Lab Batch Date: 2025-01-27 Net Weight per Unit: 2000.000 mg
Sample # AAGI292 Completion Date: 2025-02-03

HHCP
Specimen Weight: 501.370 mg

Tested
SOP13.050 (LCMS)

Dilution Factor: 50000.000

Analyte	LOD (%)	LOQ (%)	Result (mg/g)	(%) Analyte	LOD (%)	LOQ (%)	Result (mg/g)	(%)
(9R)-HHC	3.6600E-6	0.075	376.0000	37.6	2.760000E-5	0.075	<LOQ	<LOQ
(9S)-HHC	6.6000E-6	0.075	121.0000	12.1	2.480000E-4	0.075	<LOQ	<LOQ
(±)-9β-hydroxy-HHC	7.7800E-6	0.075	1.6100	0.161	2.8000E-4	0.075	<LOQ	<LOQ
1(R)-H4-CBD	7.330000E-7	0.15	<LOQ	<LOQ	1.600000E-4	0.075	<LOQ	<LOQ
1(S)-H4-CBD	6.630000E-7	0.15	<LOQ	<LOQ	1.440000E-7	0.075	<LOQ	<LOQ
9(R)-HHCP	3.0900E-5	0.075	<LOQ	<LOQ	0.075	498.6100	49.861	
9(S)-HHCP	2.5500E-5	0.075	<LOQ	<LOQ				

Aixia Sun
Aixia Sun Lab Director/Principal Scientist
D.H.Sc., M.Sc., B.Sc., MT (AAB)

Definitions are found on page 1

This report shall not be reproduced, without written approval, from ACS Laboratory. The results of this report relate only to the material or product analyzed. Test results are confidential unless explicitly waived otherwise. ACS Laboratory is accredited to the ISO/IEC 17025:2017 Standard. The tests and/or calibrations marked with an "*" are not ISO/IEC 17025:2017 accredited test results.

