

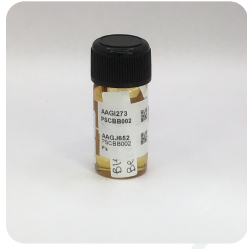


**Certificate of Analysis**  
Compliance Test

Client Information:

P's Batch # PSCBB002 Test Reg State: Florida  
2625 S Hickory Batch Date: 2025-01-22  
Santa Ana, California 92707 Extracted From: Hemp

Order # PS250210-010001 Sampling Date: 2025-02-12 Initial Gross Weight: 29.866 g  
Order Date: 2025-02-10 Lab Batch Date: 2025-02-12  
Sample # AAGJ652 Completion Date: 2025-02-17



Product Image

**Heavy Metals** **Passed**
**2,3-Butanedione** **Passed**
**Mycotoxins** **Passed**
**Pesticides** **Passed**
**Residual Solvents** **Passed**

**Pathogenic** **Passed**
**Microbiology (qPCR)** **Passed**
**Vitamin E** **Passed**

**2,3-butanedione(Diacetyl)**  
Specimen Weight: 15.500 mg

Dilution Factor: 1.000

Analyte	LOD (ppm)	LOQ (ppm)	Result (ppm)
2,3-Butanedione	.024	0.024	<LOQ

**Pathogenic SAE (qPCR)**  
Specimen Weight: 1029.800 mg

Dilution Factor: 1.000

Analyte	Action Level (cfu/g)	Result (cfu/g)	Analyte	Action Level (cfu/g)	Result (cfu/g)
Aspergillus (Flavus, Fumigatus, Niger, Terreus)	1	Absence in 1g	Salmonella	1	Absence in 1g
E.Coli	1	Absence in 1g			

**Passed**  
SOP13.039 (GCMS-MS)

**Total Yeast and Mold**  
Specimen Weight: 500.800 mg

Dilution Factor: 8.000

Analyte	Action Level (cfu/g)	LOQ (cfu/g)	Result (cfu/g)
Total Yeast/Mold	100000	1000	<LOQ

**Passed**  
SOP13.017 (qPCR)



Aixia Sun Lab Director/Principal Scientist  
D.H.Sc., M.Sc., B.Sc., MT (AAB)



Definitions and Abbreviations used in this report: Total Active CBD = CBD + (CBD-A \* 0.877), \*Total CBDV = CBDV + (CBDVA \* 0.867), Total Active THC = THCA-A \* 0.877 + Delta 9 THC, Total THC = THC + (THCVA \* 0.87), CBG Total = (CBGA \* 0.878) + CBG, CBN Total = (CBNA \* 0.876) + CBN, Total CBC = CBC + (CBCA \* 0.877), Total THC-O-Acetate = Delta 8 THC-O-Acetate + Delta 9 THC-O-Acetate, Total THCP = Delta8-THCP + Delta9-THCP, Total Cannabinoids = Total percentage of cannabinoids within the sample. (mg/ml) = Milligrams per Milliliter, LOQ = Limit of Quantitation, LOD = Limit of Detection, Dilution = Dilution Factor, (ppb) = Parts per Billion, (%) = Percent, (cfu/g) = Colony Forming Unit per Gram, (µg/g) = Microgram per Gram, (ppm) = Parts per Million, (ppm) = (µg/g), (aw) = Water Activity, (mg/Kg) = Milligram per Kilogram. ACS uses simple acceptance criteria. Passed - Analyte/microbe is not detected or is at the level below the action limit per FL rule 64ER20-39, 5K-4.036, 5K-4.034. Failed - Analyte/microbe is at the level that equal or above the action limit per FL rule 64ER20-39, 5K-4.036, 5K-4.034 The results apply to the sample as received.  
This report shall not be reproduced, without written approval, from ACS Laboratory. The results of this report relate only to the material or product analyzed. Test results are confidential unless explicitly waived otherwise. ACS Laboratory is accredited to the ISO/IEC 17025:2017 Standard.



**Certificate of Analysis**  
Compliance Test

**Client Information:**

**P's** Batch # PSCBB002 Test Reg State: Florida  
2625 S Hickory Batch Date: 2025-01-22  
Santa Ana, California 92707 Extracted From: Hemp  
Order # PS250210-010001 Sampling Date: 2025-02-12 Initial Gross Weight: 29.866 g  
Order Date: 2025-02-10 Lab Batch Date: 2025-02-12  
Sample # AAGJ652 Completion Date: 2025-02-17

**E Vitamin E (Tocopheryl Acetate)** **Passed**  
Specimen Weight: 612.200 mg SOP13.007 (LCMS)

Dilution Factor: 2.450

Analyte	LOD (ppb)	LOQ (ppb)	Action Level (ppb)	Result (ppb)
Tocopheryl Acetate (Vitamin E Acetate)	.705	500	500	<LOQ

**H Heavy Metals** **Passed**  
Specimen Weight: 252.100 mg SOP13.048 (ICP-MS)

Dilution Factor: 198

Analyte	LOD (ppb)	LOQ (ppb)	Action Level (ppb)	Result (ppb)	Analyte	LOD (ppb)	LOQ (ppb)	Action Level (ppb)	Result (ppb)
Arsenic (As)	4.83	100	200	<LOQ	Lead (Pb)	11.76	100	500	<LOQ
Cadmium (Cd)	.64	100	200	<LOQ	Mercury (Hg)	.58	100	200	<LOQ

**Mycotoxins** **Passed**  
Specimen Weight: 612.200 mg SOP13.007 (LCMS)

Dilution Factor: 2.450

Analyte	LOD (ppb)	LOQ (ppb)	Action Level (ppb)	Result (ppb)	Analyte	LOD (ppb)	LOQ (ppb)	Action Level (ppb)	Result (ppb)
Aflatoxin B1	3.0400E-1	6	20	<LOQ	Aflatoxin G2	2.7100E-1	6	20	<LOQ
Aflatoxin B2	7.7000E-2	6	20	<LOQ	Ochratoxin A	7.5400E-1	3.8	20	<LOQ
Aflatoxin G1	3.0400E-1	6	20	<LOQ					

*Aixia Sun*  
Aixia Sun Lab Director/Principal Scientist  
D.H.Sc., M.Sc., B.Sc., MT (AAB)

Definitions are found on page 1

This report shall not be reproduced, without written approval, from ACS Laboratory. The results of this report relate only to the material or product analyzed. Test results are confidential unless explicitly waived otherwise. ACS Laboratory is accredited to the ISO/IEC 17025:2017 Standard.





**Certificate of Analysis**  
Compliance Test

**Client Information:**

**P's** Batch # PSCBB002 Test Reg State: Florida  
2625 S Hickory Batch Date: 2025-01-22  
Santa Ana, California 92707 Extracted From: Hemp

Order # PS250210-010001 Sampling Date: 2025-02-12 Initial Gross Weight: 29.866 g  
Order Date: 2025-02-10 Lab Batch Date: 2025-02-12  
Sample # AAGJ652 Completion Date: 2025-02-17



**Residual Solvents - FL (CBD)**

Specimen Weight: 15.500 mg

**Passed**  
SOP13.039 (GCMS-HS)

Dilution Factor: 1.000

Analyte	LOD (ppm)	LOQ (ppm)	Action Level (ppm)	Result (ppm)	Analyte	LOD (ppm)	LOQ (ppm)	Action Level (ppm)	Result (ppm)
1,1-Dichloroethene	0.0094	0.16	8	<LOQ	Heptane	0.0013	1.39	5000	<LOQ
1,2-Dichloroethane	0.0003	0.04	2	<LOQ	Hexane	0.068	1.17	290	<LOQ
Acetone	0.015	2.08	5000	<LOQ	Isopropyl alcohol	0.0048	1.39	500	<LOQ
Acetonitrile	0.06	1.17	410	<LOQ	Methanol	0.0005	0.69	3000	<LOQ
Benzene	0.0002	0.02	2	<LOQ	Methylene chloride	0.0029	2.43	600	<LOQ
Butanes	0.4167	2.5	2000	<LOQ	Pentane	0.037	2.08	5000	<LOQ
Chloroform	0.0001	0.04	60	<LOQ	Propane	0.031	5.83	2100	<LOQ
Ethanol	0.0021	2.78	5000	<LOQ	Toluene	0.0009	2.92	890	<LOQ
Ethyl Acetate	0.0012	1.11	5000	<LOQ	Total Xylenes	0.0001	2.92	2170	<LOQ
Ethyl Ether	0.0049	1.39	5000	<LOQ	Trichloroethylene	0.0014	0.49	80	<LOQ
Ethylene Oxide	0.0038	0.1	5	<LOQ					

*Aixia Sun*  
Aixia Sun Lab Director/Principal Scientist  
D.H.Sc., M.Sc., B.Sc., MT (AAB)

Definitions are found on page 1

This report shall not be reproduced, without written approval, from ACS Laboratory. The results of this report relate only to the material or product analyzed. Test results are confidential unless explicitly waived otherwise. ACS Laboratory is accredited to the ISO/IEC 17025:2017 Standard.





**Certificate of Analysis**  
Compliance Test

Client Information:

**P's** Batch # PSCBB002 Test Reg State: Florida  
2625 S Hickory Batch Date: 2025-01-22 Extracted From: Hemp  
Santa Ana, California 92707  
Order # PS250210-010001 Sampling Date: 2025-02-12 Initial Gross Weight: 29.866 g  
Order Date: 2025-02-10 Lab Batch Date: 2025-02-12  
Sample # AAGJ652 Completion Date: 2025-02-17

**Pesticides**

Specimen Weight: N/A Dilution Factor: 2.450

**Passed**

Analyte	LOD (ppb)	LOQ (ppb)	Action Level (ppb)	Result (ppb)	Analyte	LOD (ppb)	LOQ (ppb)	Action Level (ppb)	Result (ppb)
Abamectin	2.8800E-1	28.23	100	<LOQ	Fludioxonil	1.7400E+0	48	100	<LOQ
Acephate	2.3000E-2	30	100	<LOQ	Hexythiazox	4.9000E-2	30	100	<LOQ
Acequinocyl	9.5640E+0	48	100	<LOQ	Imazalil	2.4800E-1	30	100	<LOQ
Acetamiprid	5.2000E-2	30	100	<LOQ	Imidacloprid	9.4000E-2	30	400	<LOQ
Aldicarb	2.6000E-2	30	100	<LOQ	Kresoxim Methyl	4.2000E-2	30	100	<LOQ
Azoxystrobin	8.1000E-2	10	100	<LOQ	Malathion	8.2000E-2	30	200	<LOQ
Bifenazate	1.4150E+0	30	100	<LOQ	Metalaxyl	8.1000E-2	10	100	<LOQ
Bifenthrin	4.3000E-2	30	200	<LOQ	Methiocarb	3.2000E-2	30	100	<LOQ
Boscalid	5.5000E-2	10	100	<LOQ	Methomyl	2.2000E-2	30	100	<LOQ
Captan	6.1200E+0	30	700	<LOQ	methyl-Parathion	1.7100E+0	10	100	<LOQ
Carbaryl	2.2000E-2	10	500	<LOQ	Mevinphos	2.1500E+0	10	100	<LOQ
Carbofuran	3.4000E-2	10	100	<LOQ	MGK-264	5.8500E-1	10	100	<LOQ
Chlorantraniliprole	3.3000E-2	10	1000	<LOQ	Myclobutanil	1.0290E+0	30	100	<LOQ
Chlordane	1.0000E+1	10	100	<LOQ	Naled	9.5000E-2	30	250	<LOQ
Chlorfenapyr	3.4000E-2	30	100	<LOQ	Oxamyl	2.5000E-2	30	500	<LOQ
Chlormequat Chloride	1.0800E-1	10	1000	<LOQ	Pacllobutrazol	6.5000E-2	30	100	<LOQ
Chlorpyrifos	3.5000E-2	30	100	<LOQ	Pentachloronitrobenzene	1.3200E+0	10	150	<LOQ
Clofentezine	1.1900E-1	30	200	<LOQ	Permethrin	3.4300E-1	30	100	<LOQ
Coumaphos	3.7700E+0	48	100	<LOQ	Phosmet	8.2000E-2	30	100	<LOQ
Cyfluthrin	3.1100E+0	30	500	<LOQ	Piperonylbutoxide	2.9000E-2	30	3000	<LOQ
Cypermethrin	1.4490E+0	30	500	<LOQ	Prallethrin	7.9800E-1	30	100	<LOQ
Daminozide	8.8500E-1	30	100	<LOQ	Propiconazole	7.0000E-2	30	100	<LOQ
Diazinon	4.4000E-2	30	100	<LOQ	Propoxur	4.6000E-2	30	100	<LOQ
Dichlorvos	2.1820E+0	30	100	<LOQ	Pyrethrins	2.3593E+1	30	500	<LOQ
Dimethoate	2.1000E-2	30	100	<LOQ	Pyridaben	3.2000E-2	30	200	<LOQ
Dimethomorph	5.8300E+0	48	200	<LOQ	Spinetoram	8.0000E-2	10	200	<LOQ
Ethoprophos	3.6000E-1	30	100	<LOQ	Spinosad	8.8000E-2	30	100	<LOQ
Etofenprox	1.1600E-1	30	100	<LOQ	Spiromesifen	2.6100E-1	30	100	<LOQ
Etoxazole	9.5000E-2	30	100	<LOQ	Spirotetramat	8.9000E-2	30	100	<LOQ
Fenhexamid	5.1000E-1	10	100	<LOQ	Spiroxamine	1.3100E-1	30	100	<LOQ
Fenoxycarb	1.0700E-1	30	100	<LOQ	Tebuconazole	6.7000E-2	30	100	<LOQ
Fenpyroximate	1.3800E-1	30	100	<LOQ	Thiacloprid	6.4000E-2	30	100	<LOQ
Fipronil	1.0700E-1	30	100	<LOQ	Thiamethoxam	5.0000E-2	30	500	<LOQ
Fonicamid	5.1700E-1	30	100	<LOQ	Trifloxystrobin	3.7000E-2	30	100	<LOQ

*Aixia Sun*  
Aixia Sun Lab Director/Principal Scientist  
D.H.Sc., M.Sc., B.Sc., MT (AAB)

Definitions are found on page 1

This report shall not be reproduced, without written approval, from ACS Laboratory. The results of this report relate only to the material or product analyzed. Test results are confidential unless explicitly waived otherwise. ACS Laboratory is accredited to the ISO/IEC 17025:2017 Standard.

