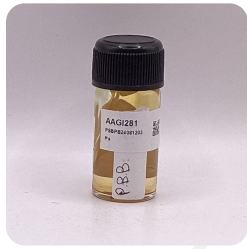




**Certificate of Analysis**  
Compliance Test

Client Information:

**P's** Batch # PSBPB24081203 Test Reg State: Florida  
2625 S Hickory Batch Date: 2025-01-22  
Santa Ana, California 92707 Extracted From: Hemp  
Order # PS250122-040001 Sampling Date: 2025-01-27 Initial Gross Weight: 30.009 g  
Order Date: 2025-01-22 Lab Batch Date: 2025-01-27  
Sample # AAGI281 Completion Date: 2025-02-03



Product Image

Potency  
Tested

Potency 25 (LCUV) Specimen Weight: 502.190 mg **Tested** SOP13.001 (LCUV)

Analyte	Dilution (1:n)	LOD (mg/g)	LOQ (%)	Result (mg/g)	(%)
Delta9-THCP *	50000.000	1.17E-5	0.012	967.6000	96.7600
Delta8-THCP *	500.000	3.75E-4	0.015	18.6300	1.8630
THCV	50.000	7.00E-6	0.015	0.4000	0.0400
CBC	50.000	1.80E-5	0.015	<LOQ	<LOQ
CBCA	50.000	1.07E-4	0.015	<LOQ	<LOQ
CBD	50.000	5.40E-5	0.015	<LOQ	<LOQ
CBDA	50.000	1.00E-5	0.015	<LOQ	<LOQ
CBDV	50.000	6.50E-5	0.015	<LOQ	<LOQ
CBDVA	50.000	1.40E-5	0.015	<LOQ	<LOQ
CBG	50.000	2.48E-4	0.015	<LOQ	<LOQ
CBGA	50.000	8.00E-5	0.015	<LOQ	<LOQ
CBL	50.000	3.50E-5	0.015	<LOQ	<LOQ
CBN	50.000	1.40E-5	0.015	<LOQ	<LOQ
CBNA	50.000	9.50E-5	0.015	<LOQ	<LOQ
CBT	50.000	2.00E-4	0.015	<LOQ	<LOQ
Delta-8 THC	50.000	2.60E-5	0.015	<LOQ	<LOQ
Delta-8 THC-O Acetate	50.000	2.70E-5	0.025	<LOQ	<LOQ
Delta-8 THC-V	50.000	4.00E-5	0.015	<LOQ	<LOQ
Delta-9 THC	50.000	1.30E-5	0.015	<LOQ	<LOQ
Delta-9 THC-O Acetate	50.000	7.70E-5	0.025	<LOQ	<LOQ
Exo-THC	50.000	2.30E-4	0.015	<LOQ	<LOQ
THCA-A	50.000	3.20E-5	0.015	<LOQ	<LOQ
THCB *	50.000	1.80E-4	0.0163	<LOQ	<LOQ
THCH *	50.000	3.50E-4	0.0163	<LOQ	<LOQ
THCVA	50.000	4.70E-5	0.015	<LOQ	<LOQ
Total Active CBD	50.000			<LOQ	<LOQ
Total Active THC	50.000			<LOQ	<LOQ

Potency Summary

Total Active THC None Detected	Total Active CBD None Detected
Total CBG None Detected	Total CBN None Detected
Total Cannabinoids 98.663%	

Aixia Sun Lab Director/Principal Scientist  
D.H.Sc., M.Sc., B.Sc., MT (AAB)



Definitions and Abbreviations used in this report: Total Active CBD = CBD + (CBD-A \* 0.877), \*Total CBDV = CBDV + (CBDVA \* 0.867), Total Active THC = THCA-A \* 0.877 + Delta 9 THC, Total THCV = THCV + (THCVA \* 0.87), CBG Total = (CBGA \* 0.878) + CBG, CBN Total = (CBNA \* 0.876) + CBN, Total CBC = CBC + (CBCA \* 0.877), Total THC-O-Acetate = Delta 8 THC-O-Acetate + Delta 9 THC-O-Acetate, Total THCP = Delta8-THCP + Delta9-THCP, Total Cannabinoids = Total percentage of cannabinoids within the sample. (mg/ml) = Milligrams per Milliliter, LOQ = Limit of Quantitation, LOD = Limit of Detection, Dilution = Dilution Factor, (ppb) = Parts per Billion, (%) = Percent, (cfu/g) = Colony Forming Unit per Gram, (µg/g) = Microgram per Gram, (ppm) = Parts per Million, (ppm) = (µg/g), (aw) = Water Activity, (mg/Kg) = Milligram per Kilogram. ACS uses simple acceptance criteria. Passed - Analyte/microbe is not detected or is at the level below the action limit per FL rule 64ER20-39, 5K-4.036, 5K-4.034. Failed - Analyte/microbe is at the level that equal or above the action limit per FL rule 64ER20-39, 5K-4.036, 5K-4.034 The results apply to the sample as received.  
This report shall not be reproduced, without written approval, from ACS Laboratory. The results of this report relate only to the material or product analyzed. Test results are confidential unless explicitly waived otherwise. ACS Laboratory is accredited to the ISO/IEC 17025:2017 Standard. The tests and/or calibrations marked with an "\*" are not ISO/IEC 17025:2017 accredited test results.